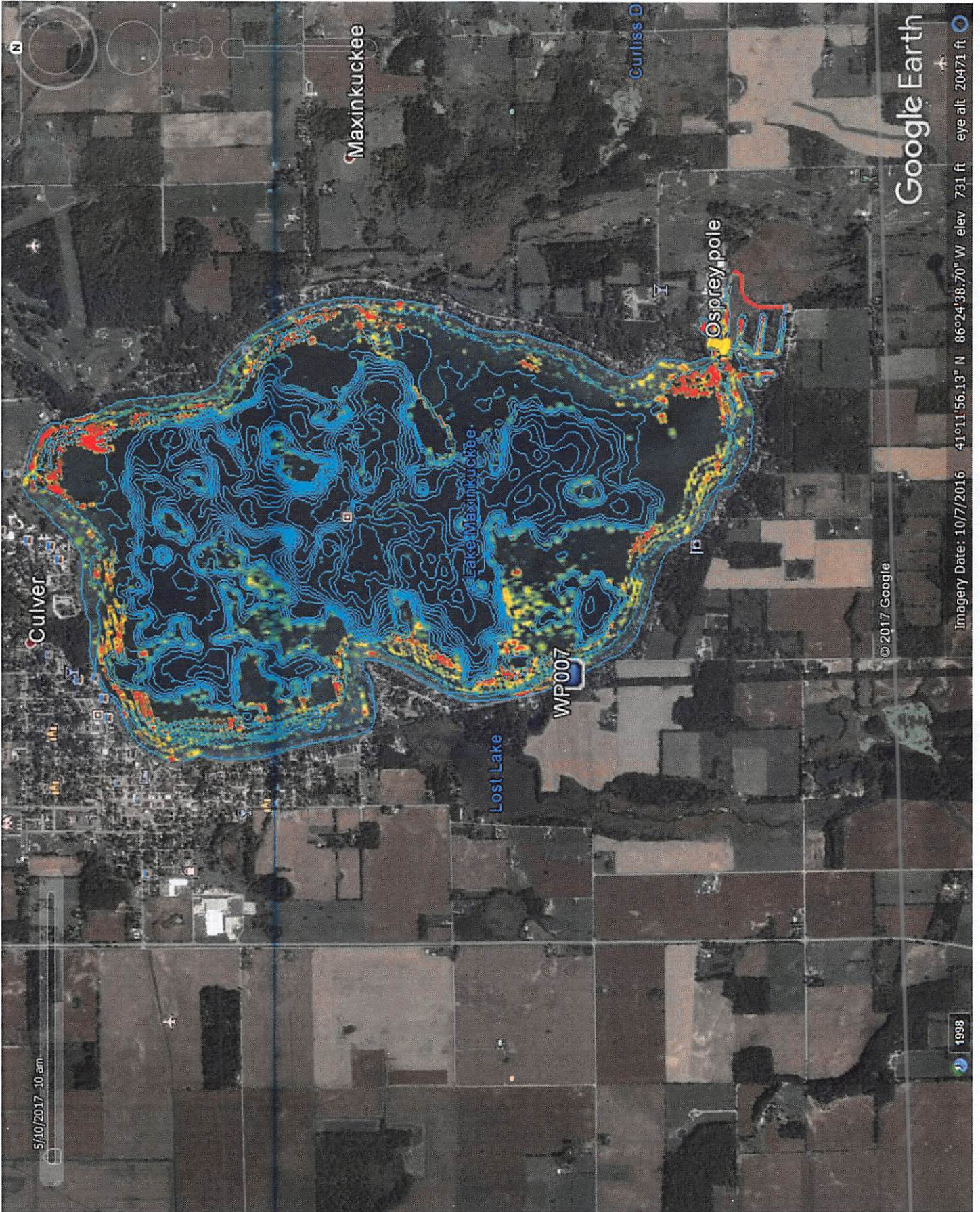


Standard Aquatic Vegetation Summary Sheet

SURVEY BY: Michael Kroll, Mitch Hiler

Code No	Plant Name	Total number of AVAS's for each Density Category				Calculations				Sum of Previous Four Columns	Total Number of AVAS's	Quotient of Column 9 divided by Column 10	Code No	Plant Name
		A	B	C	D	Category A x 1	Category B x 10	Category C x 40	Category D x 80					
		1	2	3	4	5	6	7	8					
1	Eurasian milfoil	1	4	4		1	40	160	0	201	89	2.3	1	Eurasian milfoil
2	Curly leaf pondweed	1	1			1	10	0	0	11	89	0.1	2	Curly leaf pondweed
3	Chara					0	0	0	0	0	89	0.0	3	Chara
4	Thinleaf pondweed					0	0	0	0	0	89	0.0	4	Thinleaf pondweed
5	Flatstem pondweed					0	0	0	0	0	89	0.0	5	Flatstem pondweed
6	Robbins pondweed		2			0	20	0	0	20	89	0.2	6	Robbins pondweed
7	Variable pondweed					0	0	0	0	0	89	0.0	7	Variable pondweed
8	Whitestem pondweed					0	0	0	0	0	89	0.0	8	Whitestem pondweed
9	Richardsons pondweed					0	0	0	0	0	89	0.0	9	Richardsons pondweed
10	Illinois pondweed					0	0	0	0	0	89	0.0	10	Illinois pondweed
11	Large leaf pondweed					0	0	0	0	0	89	0.0	11	Large leaf pondweed
12	American pondweed					0	0	0	0	0	89	0.0	12	American pondweed
13	Floating leaf pondweed					0	0	0	0	0	89	0.0	13	Floating leaf pondweed
14	Water stargrass					0	0	0	0	0	89	0.0	14	Water stargrass
15	Wild Celery					0	0	0	0	0	89	0.0	15	Wild Celery
16	Sagittaria					0	0	0	0	0	89	0.0	16	Sagittaria
17	Northern milfoil					0	0	0	0	0	89	0.0	17	Northern milfoil
18	M. verticillatum					0	0	0	0	0	89	0.0	18	M. verticillatum
19	M. heterophyllum					0	0	0	0	0	89	0.0	19	M. heterophyllum
20	Coontail		1			0	10	0	0	10	89	0.1	20	Coontail
21	Elodea					0	0	0	0	0	89	0.0	21	Elodea
22	Utricularia spp.					0	0	0	0	0	89	0.0	22	Utricularia spp.
23	Bladderwort-mini		1			0	10	0	0	10	89	0.1	23	Bladderwort-mini
24	Buttercup					0	0	0	0	0	89	0.0	24	Buttercup
25	Najas spp.					0	0	0	0	0	89	0.0	25	Najas spp.
26	Brittle naiad					0	0	0	0	0	89	0.0	26	Brittle naiad
27	Sago pondweed					0	0	0	0	0	89	0.0	27	Sago pondweed
28	Filamentous		2	2		0	20	80	0	100	89	1.1	28	
29	Chara		1			0	10	0	0	10	89	0.1	29	
30	Nymphaea		5	1		0	50	40	0	90	89	1.0	30	Nymphaea
31	Nuphar					0	0	0	0	0	89	0.0	31	Nuphar
32	Brasenia					0	0	0	0	0	89	0.0	32	Brasenia
33	Lemna minor	1	5			1	50	0	0	51	89	0.6	33	Lemna minor
34	Spirodella					0	0	0	0	0	89	0.0	34	Spirodella
35	Watermeal	1	5			1	50	0	0	51	89	0.6	35	Watermeal
36	Arrowhead		6			0	60	0	0	60	89	0.7	36	Arrowhead
37	Pickerelweed					0	0	0	0	0	89	0.0	37	Pickerelweed
38	Arrow Arum					0	0	0	0	0	89	0.0	38	Arrow Arum
39	Cattails		2			0	20	0	0	20	89	0.2	39	Cattails
40	Bulrushes					0	0	0	0	0	89	0.0	40	Bulrushes
41	Iris					0	0	0	0	0	89	0.0	41	Iris
42	Swamp Loosestrife					0	0	0	0	0	89	0.0	42	Swamp Loosestrife
43	Purple Loosestrife					0	0	0	0	0	89	0.0	43	Purple Loosestrife
44	Flowering Rush		1	1		0	10	40	0	50	89	0.6	44	
45						0	0	0	0	0	89	0.0	45	

5/10/2017 10 am



© 2017 Google

Google Earth

Imagery Date: 10/7/2016 41°11'56.13" N 86°24'38.70" W elev 731 ft eye alt 20471 ft

1998